


Salt Lake City Planning Division - Public Information Sheet
942 South 900 East Accessory Dwelling Unit (ADU)
PLNPCM2019-00649



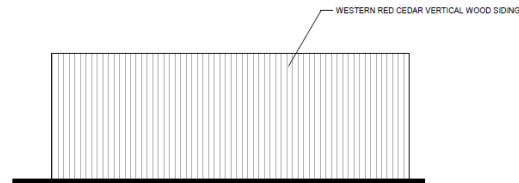
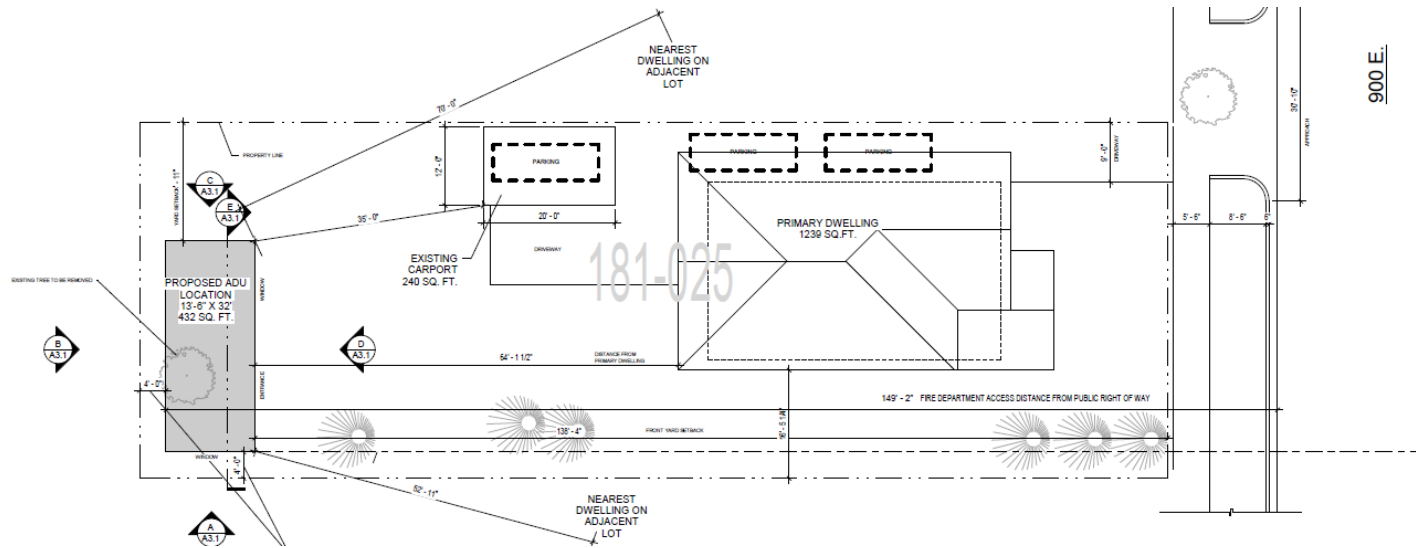
A request by Modal Living, Inc. on behalf of the property owner, Kimberlee Lofthouse, for Conditional Use approval of a detached Accessory Dwelling Unit (ADU) located in the southwest corner of the rear yard of the home at 942 South 900 East. The proposed ADU is approximately 432 square feet in size, measuring approximately 13' 6" x 32' and will be finished in 6" tongue and groove siding with decorative birch inlay. It is a flat roof structure measuring approximately 11' 3" tall. Salt Lake City Zoning Ordinance requires ADUs be reviewed as a Conditional Use within single-family residential zoning districts such as this one (R-1/5,000).

For additional information and questions, the Salt Lake City Planning Division staff contact is:
Chris Lee, Principal Planner at 801-535-7706 or christopher.lee@slcgov.com

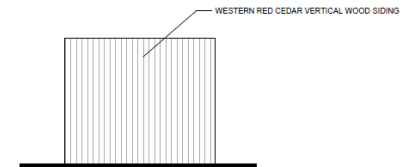


 Subject Parcel

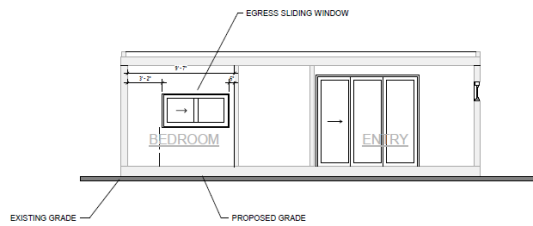




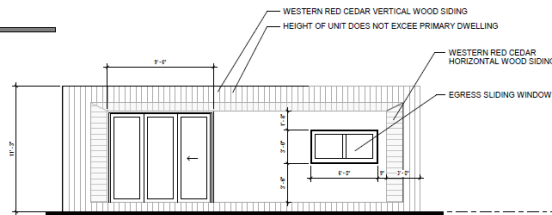
WEST ELEVATION
B
SCALE: 1/4" = 1'-0"



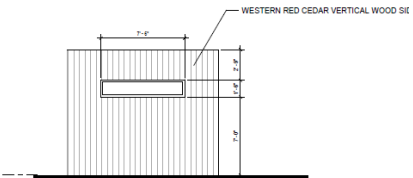
SOUTH ELEVATION
A
SCALE: 1/4" = 1'-0"



SECTION
E
SCALE: 1/4" = 1'-0"



EAST ELEVATION
D
SCALE: 1/4" = 1'-0"



NORTH ELEVATION
C
SCALE: 1/4" = 1'-0"