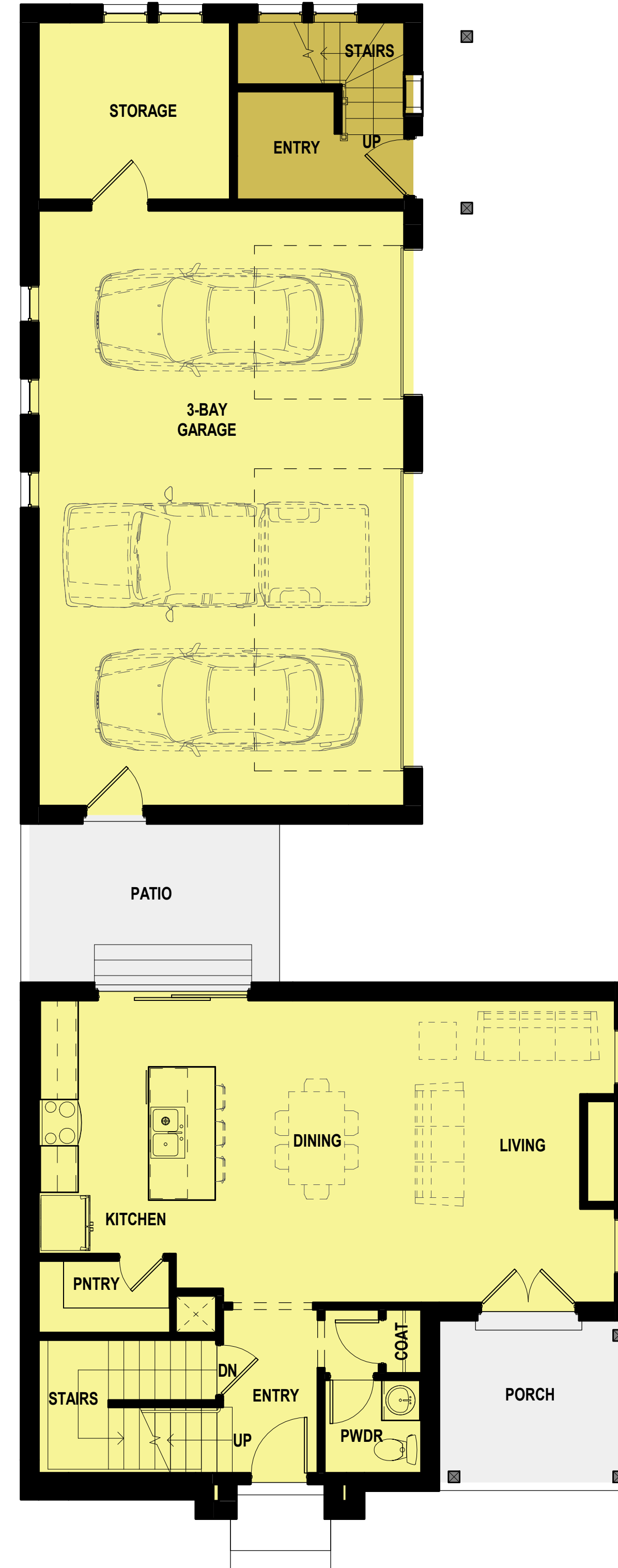


BASEMENT



FIRST FLOOR



SECOND FLOOR

|                  |         |
|------------------|---------|
| BASEMENT         | 810 SF  |
| FIRST FLOOR      | 758 SF  |
| GARAGE + STORAGE | 787 SF  |
| SECOND FLOOR     | 1095 SF |
| MAIN LIVING      | 3450 SF |

|                  |         |
|------------------|---------|
| ADU FIRST FLOOR  | 104 SF  |
| ADU SECOND FLOOR | 601 SF  |
| ADU TOTAL        | 705 SF  |
| COMBINED TOTAL   | 4156 SF |



FRONT



RIGHT

\*Enhanced Side Elevation Particular to Lot 11



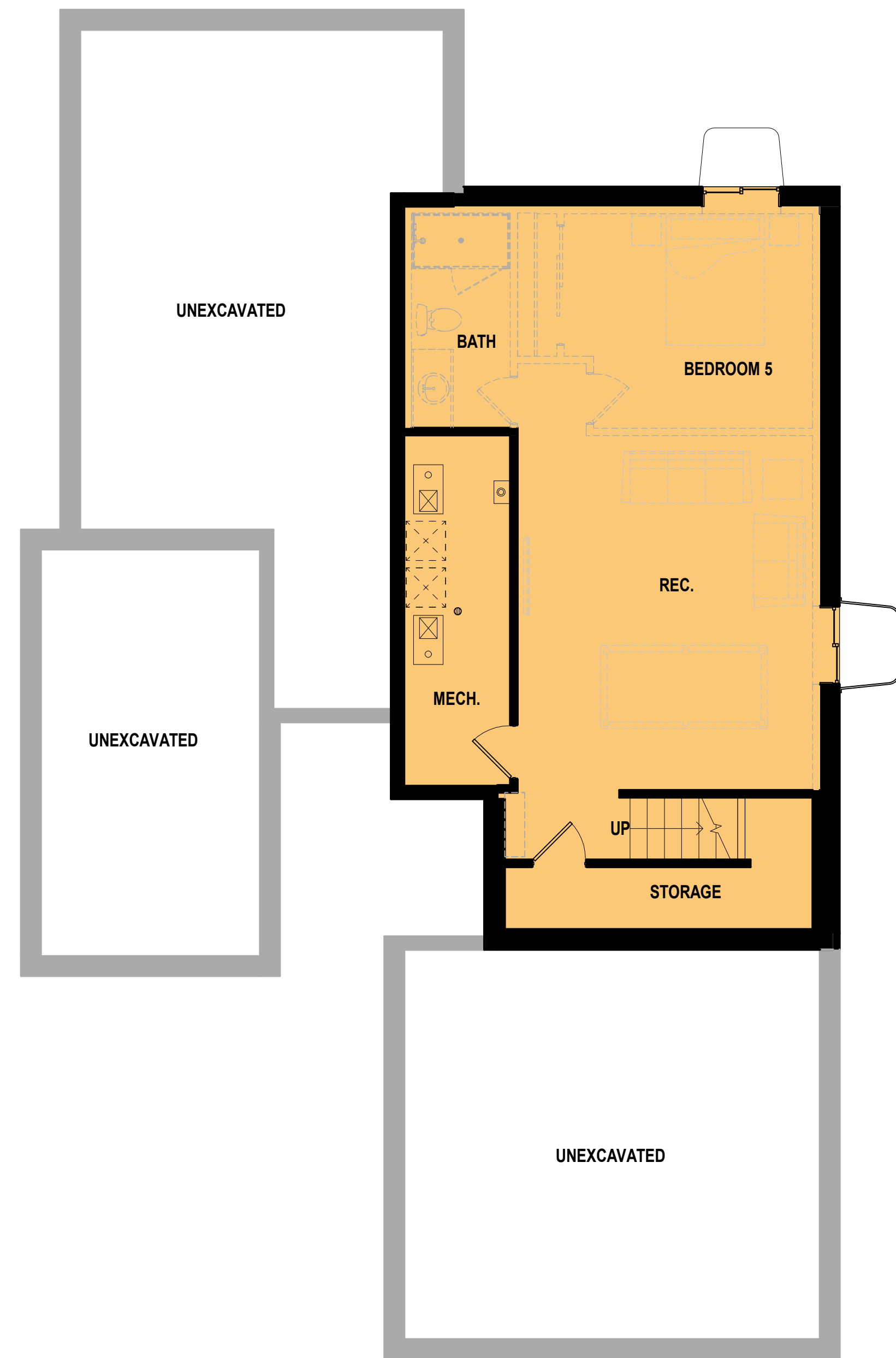
REAR

\*Enhanced Rear Elevation Particular to Lots 6 & 7



LEFT

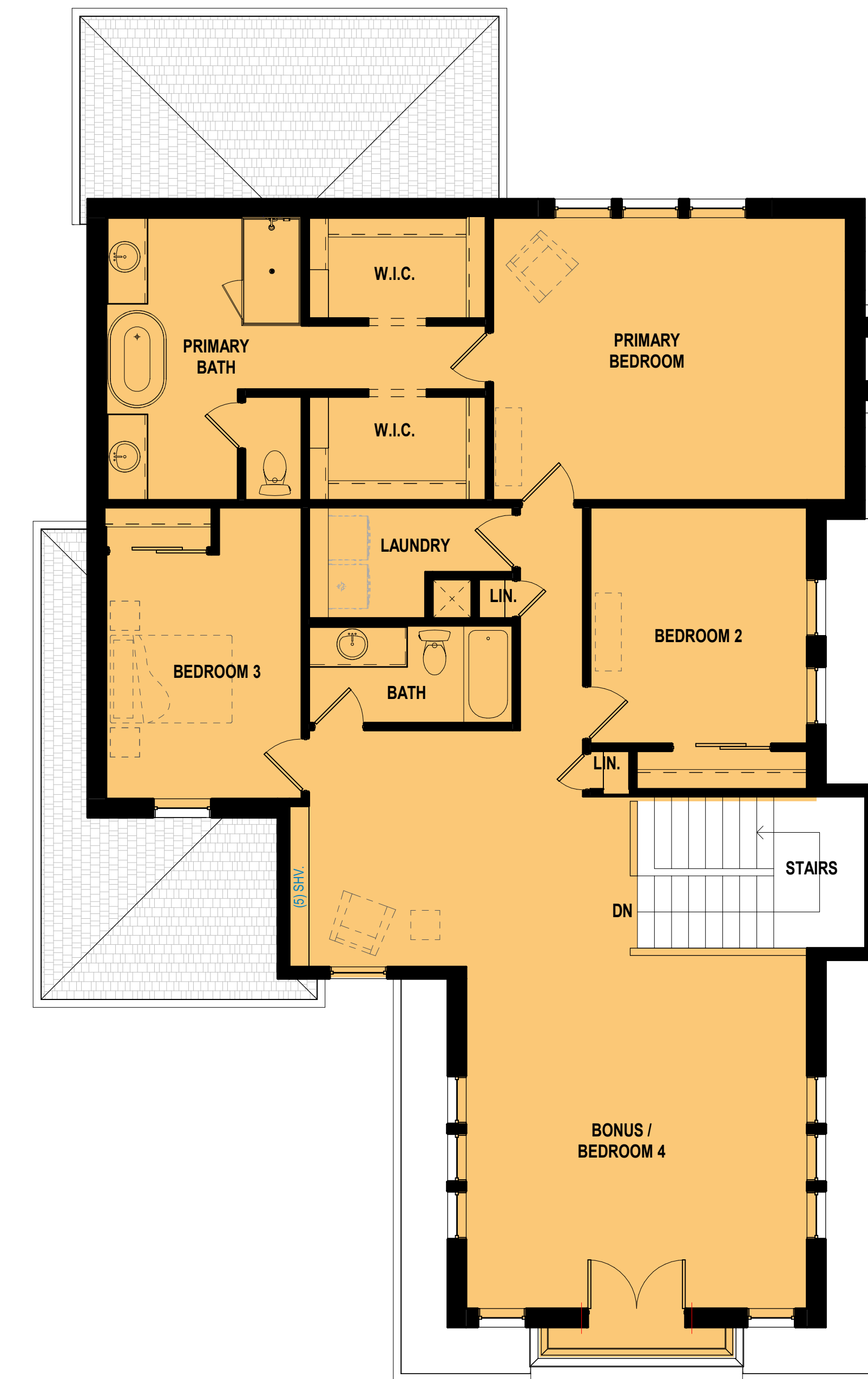
Elevations are conceptual and subject to change. Certain architectural components (bump outs, material mixes, window placements, color changes, roof lines, etc.) may be modified to promote visual diversity among units. Home elevation sides that have restricted public visibility will employ "reduced-brick" options and include stucco, hardboard or other exterior materials.



BASEMENT



FIRST FLOOR



SECOND FLOOR

|                 |         |
|-----------------|---------|
| BASEMENT        | 849 SF  |
| FIRST FLOOR     | 819 SF  |
| GARAGE          | 463 SF  |
| SECOND FLOOR    | 1685 SF |
| MAIN LIVING     | 3817 SF |
| ADU FIRST FLOOR | 540 SF  |
| ADU GARAGE      | 269 SF  |
| ADU TOTAL       | 810 SF  |
| COMBINED TOTAL  | 4626 SF |



\*Enhanced Front Facade for all Multi-Gen Lots



\*Enhanced Side Elevation Particular to Lots 8 and 19



Elevations are conceptual and subject to change. Certain architectural components (bump outs, material mixes, window placements, color changes, roof lines, etc.) may be modified to promote visual diversity among units. Home elevation sides that have restricted public visibility will employ "reduced-brick" options and include stucco, hardboard or other exterior materials.