

700 E STREETScape
1" = 30'-0"

700 S STREETScape | 009

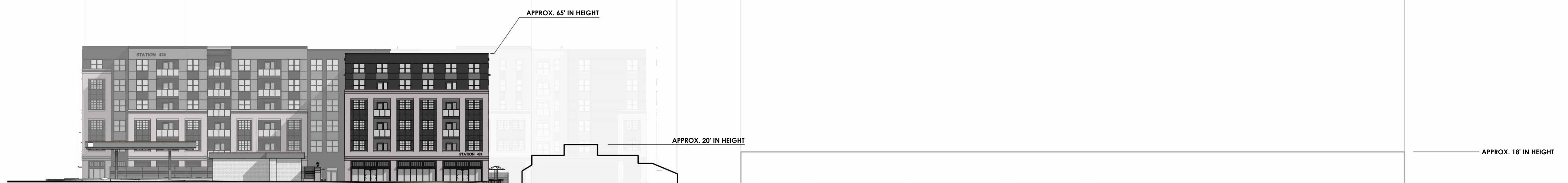
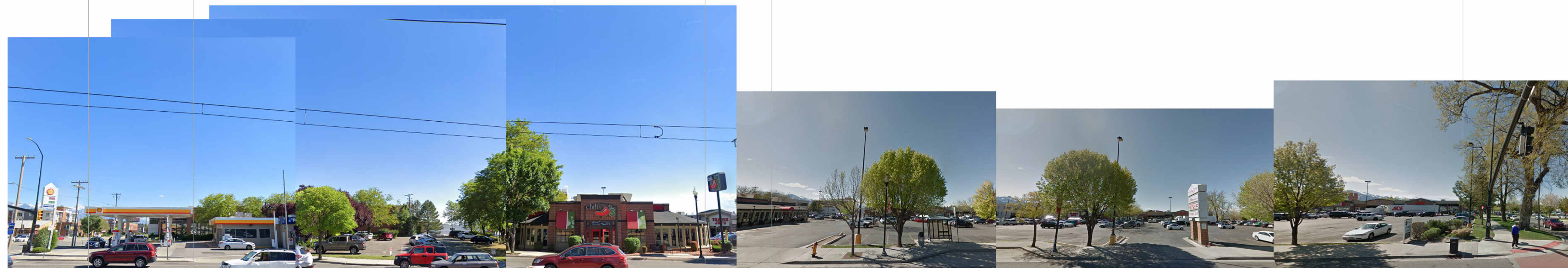
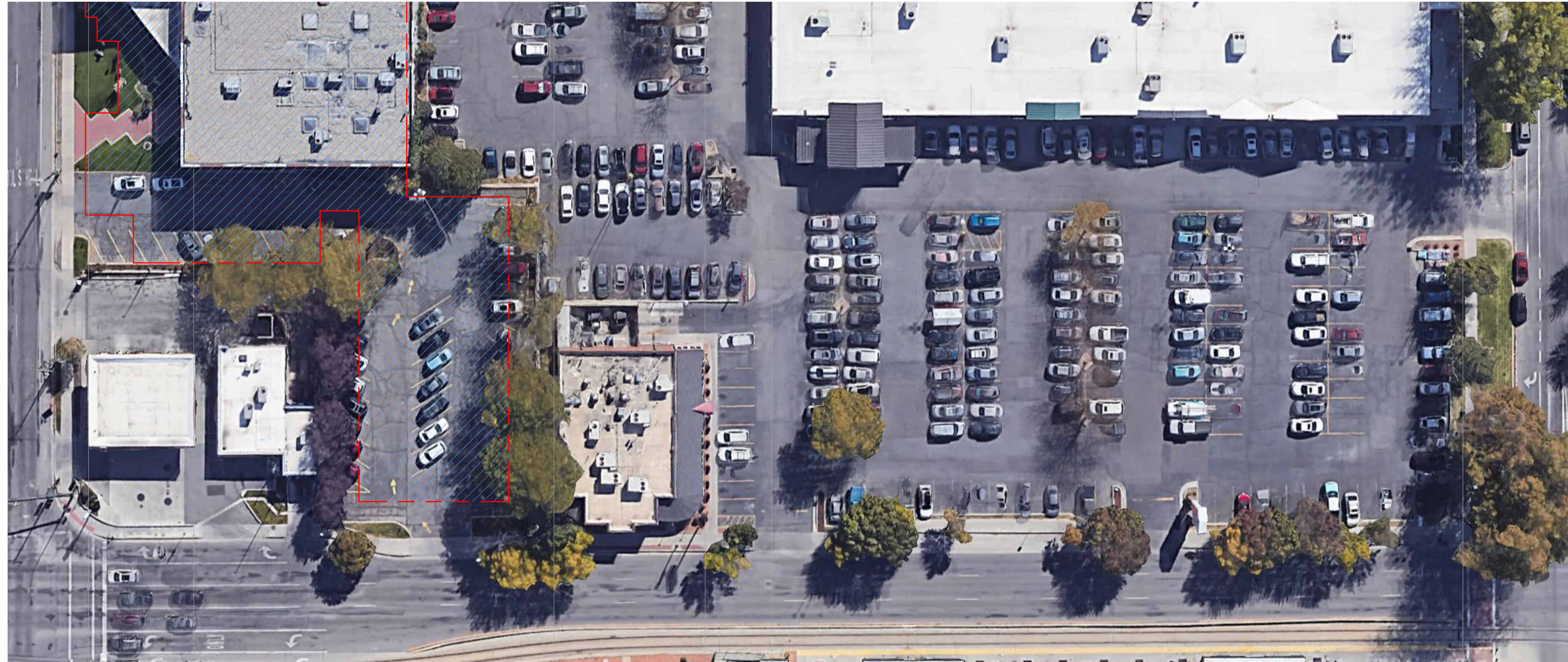
424 S 700 E SLC, UT

JUNE 28, 2022

STATION 424

Copyright © 2022, ENVISION ARCHITECTURAL GROUP





① 400 S STREETScape
1" = 30'-0"



MATERIAL LEGEND

IMAGE	CODE	MATERIAL
	B-1	INTERSTATE BRICK FULL SIZE COLOR: ASH
	B-2	INTERSTATE BRICK FULL SIZE COLOR: BLACK OPAL
	FC-1	FIBER CEMENT PANEL - GRAY
	FC-2	FIBER CEMENT PANEL - BLACK
	S-1	STUCCO - BLACK
	S-2	STUCCO - GRAY
	M-1	METAL C-CHANNEL ACCENT - BLACK
	M-2	METAL C-CHANNEL AWNING - BLACK
		TYPICAL STOREFRONT ALUMINIUM - BLACK
		TYPICAL GUARDRAIL GLASS RAILING WITH BLACK METAL SUPPORTS
		CASEMENT WINDOW PELLA IMPERVIA FIBERGLASS WINDOW WITH MUNTINS - BLACK
		(2) SINGLE HUNG WINDOWS PELLA IMPERVIA FIBERGLASS WINDOW WITH MUNTINS - BLACK
		(2) SINGLE HUNG WINDOWS PELLA IMPERVIA FIBERGLASS WINDOW WITHOUT MUNTINS - BLACK



MATERIAL LEGEND

IMAGE	CODE	MATERIAL
	B-1	INTERSTATE BRICK FULL SIZE COLOR: ASH
	B-2	INTERSTATE BRICK FULL SIZE COLOR: BLACK OPAL
	FC-1	FIBER CEMENT PANEL - GRAY
	FC-2	FIBER CEMENT PANEL - BLACK
	S-1	STUCCO - BLACK
	S-2	STUCCO - GRAY
	M-1	METAL C-CHANNEL ACCENT - BLACK
	M-2	METAL C-CHANNEL AWNING - BLACK
		TYPICAL STOREFRONT ALUMINIUM - BLACK
		TYPICAL GUARDRAIL GLASS RAILING WITH BLACK METAL SUPPORTS
		CASEMENT WINDOW PELLA IMPERVIA FIBERGLASS WINDOW WITH MUNTINS - BLACK
		(2) SINGLE HUNG WINDOWS PELLA IMPERVIA FIBERGLASS WINDOW WITH MUNTINS - BLACK
		(2) SINGLE HUNG WINDOWS PELLA IMPERVIA FIBERGLASS WINDOW WITHOUT MUNTINS - BLACK



STATION 424

