



# Briefing for the Historic Landmark Commission

Planning Division  
Community & Economic Development Department

**To:** Historic Landmark Commission  
**From:** Ray Milliner  
**Date:** July 18, 2013  
**Re:** Petition # PLNHLC2013-00453 Liberty Park Pump House

---

## ***Requests***

This is a request for a work session to review a proposed pump house in Liberty Park no final decision is requested at this time. Staff is requesting that the Historic Landmark Commission review the draft plans for the proposed pump house and provide the applicant with direction regarding the following:

- Is the location of the pump house contextually appropriate for the Park?
- Is the proposed architecture compatible with the surrounding buildings in the Park?
- If the current design is not appropriate what changes to the plan need to be made to bring it into compliance?

## ***Background***

The Salt Lake City Parks Division, represented by Troy Baker is requesting Historic Landmark Commission review of a proposed pump house to be located at the northwest corner of Liberty Lake within Liberty Park. The purpose of the pump house is to provide an aesthetic shelter and secure access for machinery associated with a new irrigation system proposed in the park.

The well and pump house are components of a larger City wide program designed to find operational inefficiencies with City infrastructure (street lighting, water, sewer, etc.) and improve them. In this case, the irrigation system for Liberty Park is the inefficiency. Currently the park is irrigated with

treated water from the City’s main water line. The proposal is to drill a well next to the lake and use secondary water to irrigate the park. This would unencumber millions of gallons of treated water from the City water supply. It will also save a significant amount of money, as the Parks Division is required to pay the Public Utilities Division for all water used.

The proposed pump house building would be considered a “feature” of a Landmark Site, Liberty Park, and as a result, design and review authority of all new construction, as well as modifications to existing structures is under the purview of the Historic Landmark Commission.

### Vicinity Map



#### Liberty Park

- Neighboring Parcels
- Subject Property

### Issues

The proposed pump house would be located at the northwest corner of Liberty Lake in a very visible and high traffic location. Park patrons would have access to the porch, but no access to the interior of

the building. No accessory use such as concession sales, boat rentals or storage is proposed for the building.

The petitioner is proposing that the building be rectangular with pitched gables at either end and a cupola centered on the roof structure. It would be approximately 600 square feet in size, with a large covered entry facing the lake and a wraparound porch on the front and both sides. Details of the proposed design include:

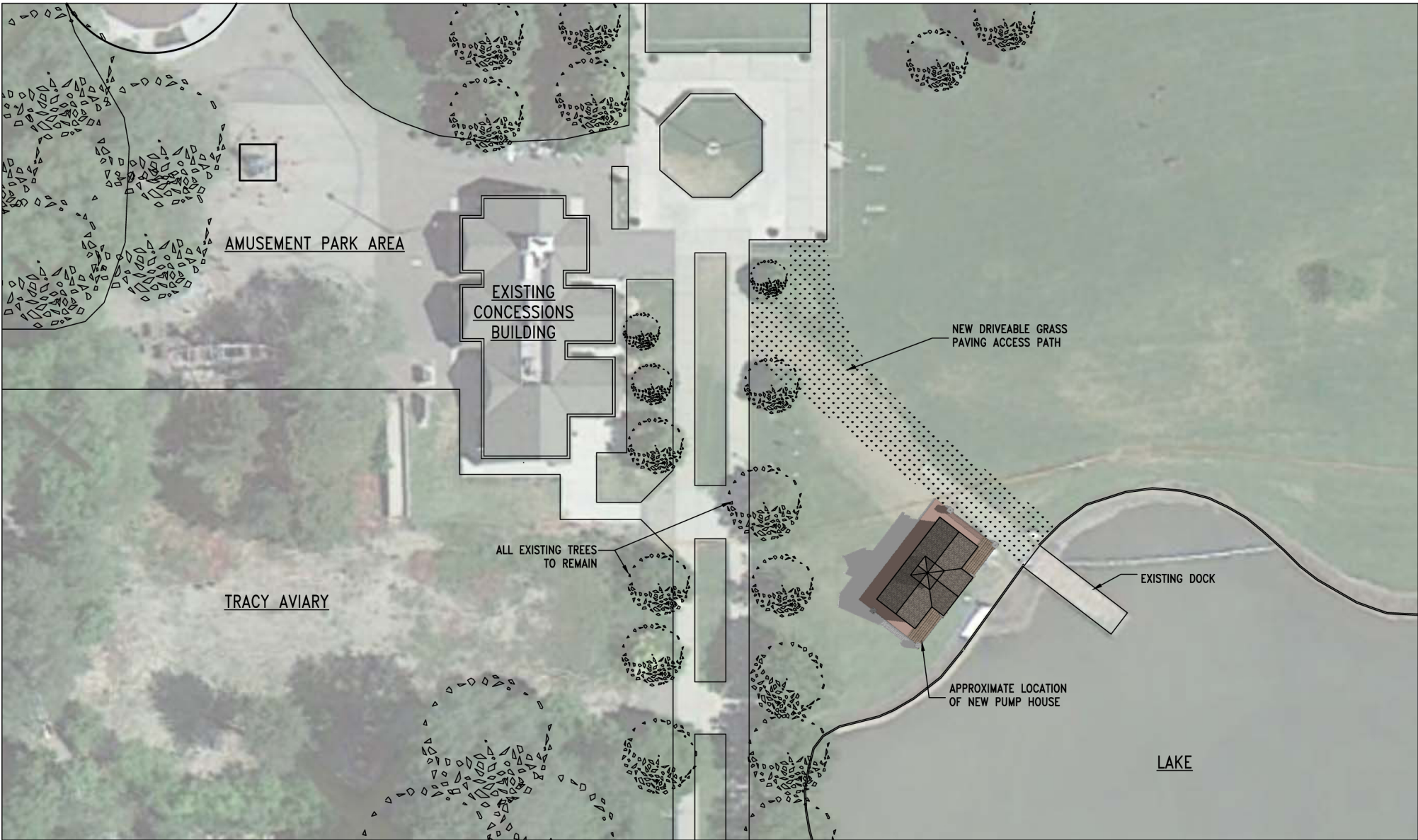
- The gable timbers similar to those on the concession building to the west.
- Rock pillars similar to the trellis pillars along the park walkway running north to south.
- A metal railing running around the porch.
- The cupola gables would mirror those of the main building. It is a feature seen on a restroom building near the playground equipment in the northwest section of the park.
- Windows in the building are proposed to be opaque, similar to the restroom building near the playground equipment. This is due to concerns about security for the pump facility and vandalism.

The cupola is not only an aesthetic feature; it would also have a practical use. In cases where repairs, replacements or other maintenance issues on the pumps are necessary the cupola would be removed with a crane and the pumps could be removed from the building through the doorway in the roof.

## ***Attachments***

- A. Proposed Elevations
- B. Letter from Applicant

***Attachment A***  
Proposed Site Plan and Elevations

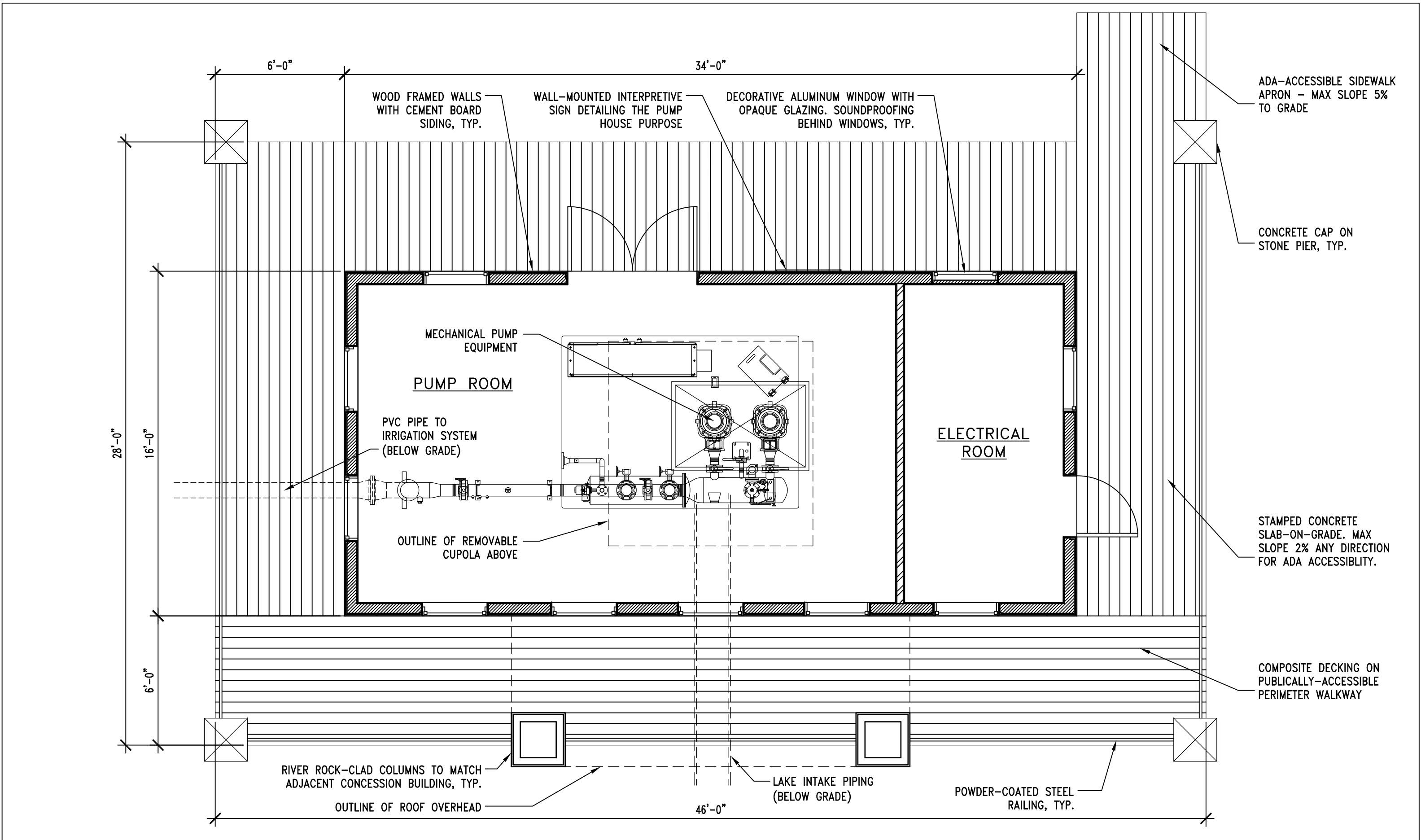


**LIBERTY PARK PUMP HOUSE**

**SITE PLAN scale 1' = 1/32"**

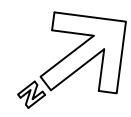






**LIBERTY PARK PUMP HOUSE**

**FLOOR PLAN** scale 1' = 1/4"





**North**



**East**



**South**



**West**







**LIBERTY PARK PUMP HOUSE**

**RENDER Looking South**







**LIBERTY PARK PUMP HOUSE**

**RENDER Looking North**





***Attachment B***  
Letter from Applicant

## Liberty Lake – Pump House

### **Objective:**

The purpose of the pump house at Liberty Park is to aesthetically shelter and provide secure access to the wet well, pumps, filter, and electrical gear, necessary for the irrigation system to utilize the Liberty Park Lake as its irrigation source.

The project will utilize the untreated water from Liberty Lake for landscape irrigation at the Park, and will conserve an average of 45 million gallons of treated water annually which can be utilized by local homes and businesses, and save operational expenses for Salt Lake City Parks Department.

The structure provides the following functions:

- 1) Safety and Code compliance – preventing accidental contact with irrigation and electrical equipment.
- 2) Future Maintenance - The building is designed to allow the removal of pumps through the roof (copula) for future maintenance and replacement.
- 3) Park Impact - The site has been chosen to minimize the impact to the park and no trees will be removed.
- 4) Inhibits Vandalism – The structure inhibits vandalism to the equipment and will be alarmed.
- 5) Increased Equipment Life - The structure provides protection for the equipment from exposure to the elements, increasing the lifespan and lowering the cost of equipment.
- 6) Aesthetics – The structure provides an aesthetically controllable shelter to achieve the functions listed.

The Pump House will contain the following equipment:

- 1) Wet well – Concrete vault which houses the two pumps.
- 2) Pumps – Pumps which directly supply water to the irrigation system. Inside wet well.
- 3) Filter System – The secondary level of filtration for the lake intake which filters out particles which may damage the irrigation system.
- 4) Electrical Equipment- Gear to support the above functions.

The proximity of the Pump House to Lake is significant and addresses a number of issues:

- 1) Intact Distance - The longer the intake line from the lake to the wet well the greater the chance of settling or other factors which can negatively impact the flow of water.
- 2) Utility Crossings - Moving the structure toward the center-line of the Park places it on or across utility lines (electrical, water, sewer, etc).
- 3) Other Impacts - Routing of the intake line away from the edge of the lake would likely have an impact on the trees adjacent to the utility crossing and walk way.



**Attachment C**  
Photos of Buildings in Liberty Park







