

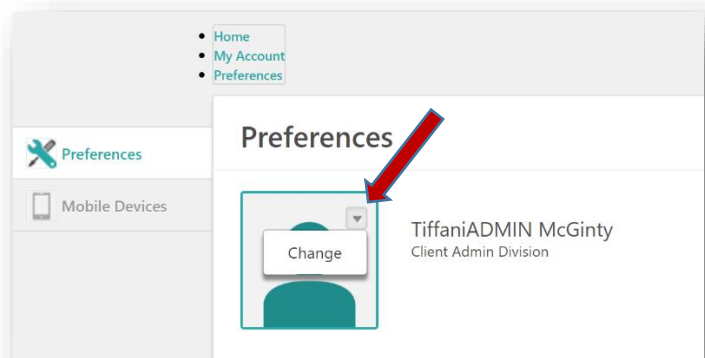


## How to add a profile photo to your LMS account

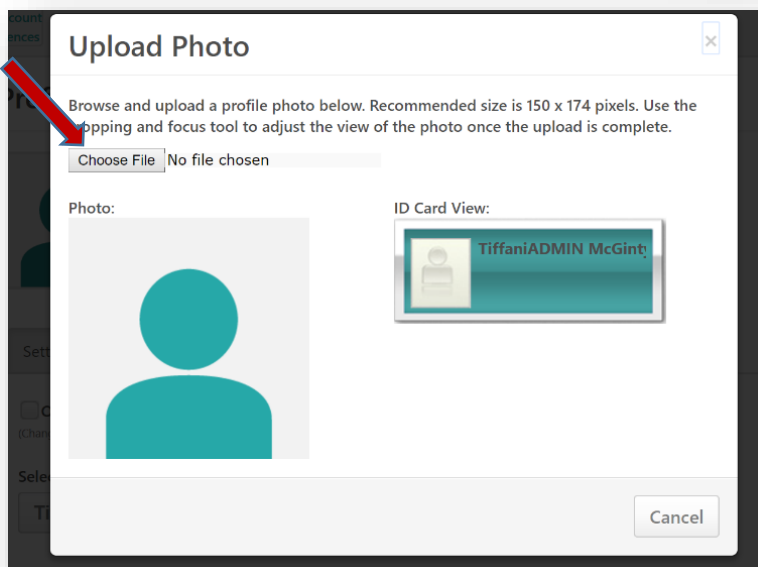
1. Make sure you have a picture of yourself already saved on your computer.
2. From any page within the LMS, **hover** over the settings wheel and **click My Account**.



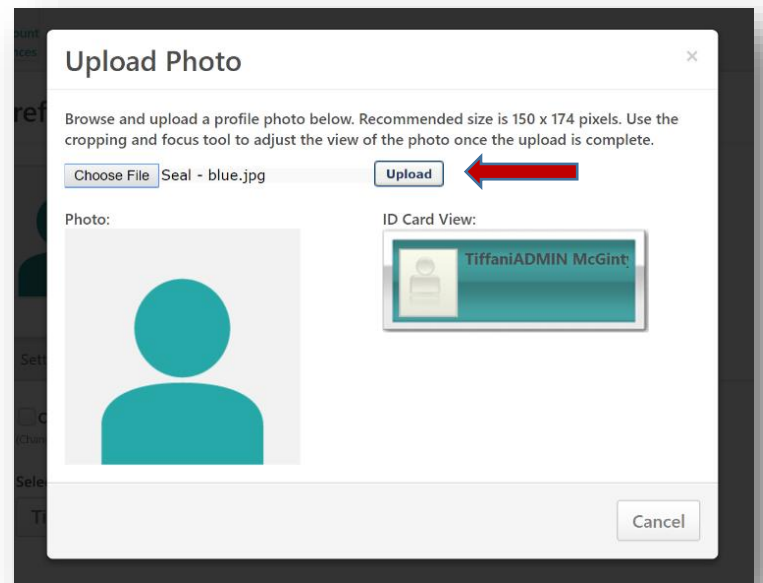
3. Hover over the photo, click the down arrow and select **Change**.



4. Select **Choose File**.



5. Once you choose the photo you want, select **Upload**.



6. Drag the **dotted box** to the area of the photo that looks best. Then, hit **Save**.

