



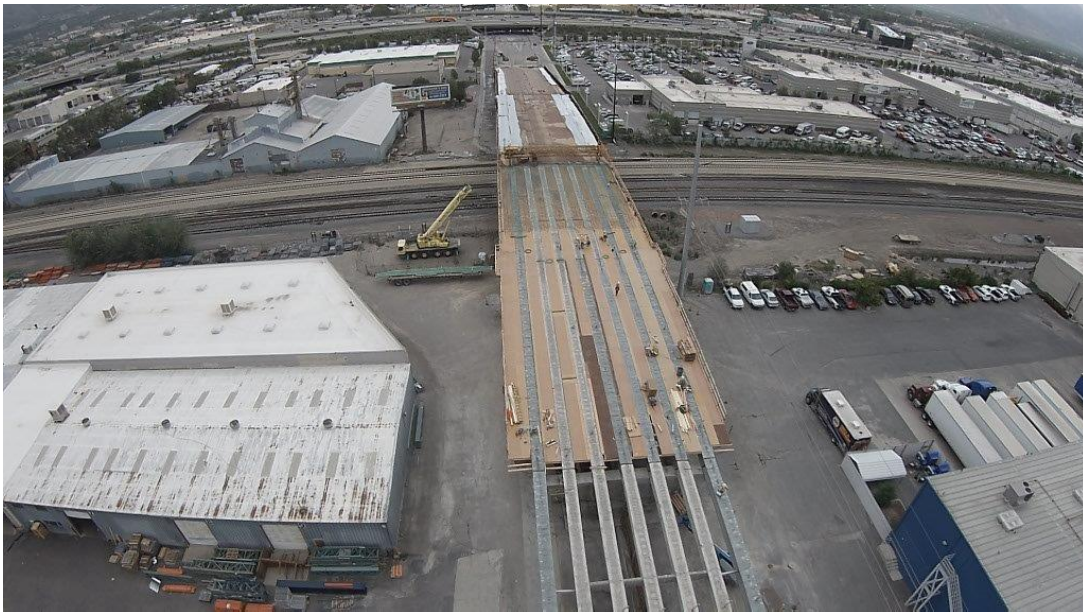
1300 South Bridge Update - June 4, 2015



Construction is underway on the 1300 South Bridge

Please stay away from the construction zone for your safety. The bridge will be fully closed for the duration of construction for safety and to shorten the schedule. Construction is expected to finish Fall 2015.

Businesses in the area are all open and access is provided.



Upcoming work for the next week

Demolition on the eastside of the bridge will wrap up this week

Work on the retaining walls

Crews are beginning to work on curb and gutter and sidewalk installation

Forming of parapets (low, protective wall along the edge of the bridge)

Concrete pours on the bridge deck will be intermittent. This work will take place at night.

Ongoing work

Forming the bridge deck, overhangs, and rebar installation will be ongoing for the next couple of months

Signal work at the 700 West intersection has begun. **Please watch for traffic shifts.**

Repairs on the columns and other items under the structure

Crews are using a **concrete scanner** (like an x-ray machine for concrete) to see through the bridge columns. (See pictures below) After the scanner is used, crews drill holes into the columns, avoiding existing rebar. Anchor rods will be placed through the columns, and steel plates will wrap around the outside of the repaired columns. These are some of the additional features that will increase seismic performance.

Project Recycling

Granite Construction recycles the majority of materials demolished on site. The concrete, girders, rebar, and other clean items can all be used again on future projects. They also use recycled asphalt in the Hot Mix Asphalt that comes onto the job.



Project Overview

This project is located on 1300 South in Salt Lake City between 500 West and 700 West and will include the following improvements:

- Major bridge rehabilitation including full deck replacement
- Bridge widened three feet
- Other needed structure repairs and improved seismic performance
- Improved pedestrian and bicycle safety/access
- New signal and intersection improvements at 1300 South and 700 West

Access to Local Businesses

Business access will be maintained during construction.

Please take a look at our **project website**, if you haven't yet. It has additional information you may find helpful.



What to expect during construction

- Bridge closure for 6 months
- Traffic and pedestrian detours
- Noise
- Vibrations
- Dust

Work Hours

24 hours a day, 7 days a week

Intermittent work at night and on Sunday depending on project needs

Questions or Comments

Please let us know if you have any questions or comments.
Thanks!

1300 South Construction Team
385-210-0585
1300south@utah.gov





1300 South

500 West to 700 West
BRIDGE REHABILITATION

Legend


Work Area
(Closed to Traffic)


Pedestrian
Detour Routes


Vehicle
Traffic Routes


At-Grade Rail Crossing
(Subject to Delays)

For UTA's Route 516
and Route 9 detour
maps, please visit
www.rideuta.com.

Project Contact

Hotline: 385-210-0595
Email: 1300south@utah.gov

Vehicle and Pedestrian Traffic Routing During Construction



©2015 Horrocks | Pleasant Grove, UT

Web Version

Forward

Unsubscribe